



Cambridge International AS & A Level

INFORMATION TECHNOLOGY

9626/04

Paper 4 Practical

For examination from 2020

MARK SCHEME

Maximum Mark: 110

Specimen

This document has **16** pages. Blank pages are indicated.

Generic Marking Principles

These general marking principles must be applied by all examiners when marking candidate answers. They should be applied alongside the specific content of the mark scheme or generic level descriptors for a question. Each question paper and mark scheme will also comply with these marking principles.

GENERIC MARKING PRINCIPLE 1:

Marks must be awarded in line with:

- the specific content of the mark scheme or the generic level descriptors for the question
- the specific skills defined in the mark scheme or in the generic level descriptors for the question
- the standard of response required by a candidate as exemplified by the standardisation scripts.

GENERIC MARKING PRINCIPLE 2:

Marks awarded are always **whole marks** (not half marks, or other fractions).

GENERIC MARKING PRINCIPLE 3:

Marks must be awarded **positively**:

- marks are awarded for correct/valid answers, as defined in the mark scheme. However, credit is given for valid answers which go beyond the scope of the syllabus and mark scheme, referring to your Team Leader as appropriate
- marks are awarded when candidates clearly demonstrate what they know and can do
- marks are not deducted for errors
- marks are not deducted for omissions
- answers should only be judged on the quality of spelling, punctuation and grammar when these features are specifically assessed by the question as indicated by the mark scheme. The meaning, however, should be unambiguous.

GENERIC MARKING PRINCIPLE 4:

Rules must be applied consistently e.g. in situations where candidates have not followed instructions or in the application of generic level descriptors.

GENERIC MARKING PRINCIPLE 5:

Marks should be awarded using the full range of marks defined in the mark scheme for the question (however; the use of the full mark range may be limited according to the quality of the candidate responses seen).

GENERIC MARKING PRINCIPLE 6:

Marks awarded are based solely on the requirements as defined in the mark scheme. Marks should not be awarded with grade thresholds or grade descriptors in mind.

Task	Answer	Marks
1(a)	See Task 1(a) below for allocation of marks.	13
1(b)	See Task 1(b) below for allocation of marks.	12

Task	Answer	Marks
2	See Task 2 below for allocation of marks.	15

Task	Answer	Marks
See Task 3 below for graphics images created.		
3	3 lobe foliage created (clearly not a single drawing)	1
	Foliage is coloured green	1
	A clear outline to foliage is shown	1
	Foliage outline is black and 1pt thick	1
	Tree trunk created and coloured brown	1
	The tree trunk is flared as shown in the question paper	1
	The tree trunk is ordered to appear behind the foliage	1
	Tree is duplicated to show 3 trees	1
	The order of the trees is clear and as shown in the question paper	1
	The trees are aligned as shown in the question paper	1
	The text 'Woodland' is shown	1
	The text is positioned as shown in the question paper	1
	The text (fit to) path is not shown	1
	The text is coloured white	1
	The text is in a sans-serif font	1
	The text has a 1pt black outline	1
	The text 'Homes' is shown	1
	The text is coloured red	1
	The text is in a sans serif font	1
	The text has a black outline	1
	The text is the same size and in the same position as shown in the question paper	1
	3 green leaved flower created	1
	The leaves are shaped and detailed as shown	1
	A light green stem is seen and is shaped as shown	1
	There is a yellow bloom with a white centre shaped as shown	1
	The proportions of the flower are correct	1
	The order of the flowers w.r.t the trees is correct	1
The text appears in front of the first flower	1	
The text appears behind the first leaf of the second flower	1	

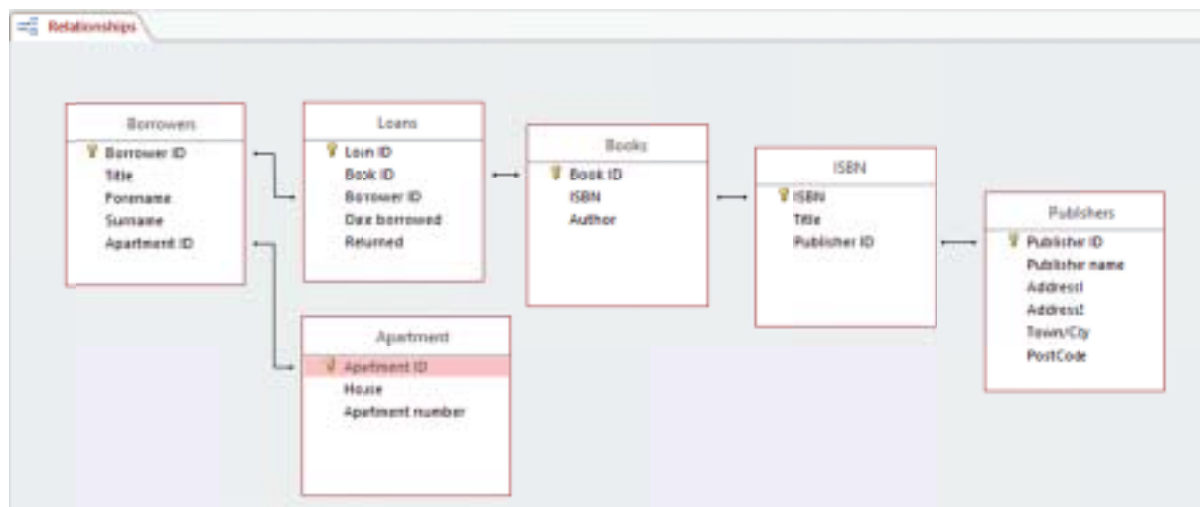
Task	Answer	Marks
3	The text appears behind the third leaf of the third flower	1
	The relative positions of the text and the blooms is correct	1
	The images are grouped and the proportions of the complete image are as shown in the question paper	1
	The image is saved in both svg and bitmap formats	1
	The image is saved with the specified filename	1
	The size of the image (250 × 200) is as specified	1
	Available marks	35

Task	Answer	Marks
See Task 4 below for samples of the animation.		
4	The Woodland image is used for 1st clip	1
	The clip fades in	1
	The correct text 'Woodlands' is shown	1
	The text is in the centre of the frame	1
	The text is coloured white	1
	The text is in a sans-serif font	1
	The text doubles in size during the clip	1
	The Peaceful image is used for the 2nd clip (no fade)	1
	The correct text 'Set in peaceful countryside' is shown	1
	The text is in the centre of the frame	1
	The text is coloured white	1
	The text is in a sans-serif font	1
	The text doubles in size during the clip	1
	The Wildlife image is used fro the 3rd clip (no fade in)	1
	The correct text 'Lots of wildlife' is shown	1
	The text is in the centre of the frame	1
	The text is coloured white	1
	The text is in a sans-serif font	1
	The text doubles in size during the clip	1
	The clip fades out	1
	The clip fades out to about 50%	1
	Each clip is 2 seconds (6 seconds overall)	1
	The animation is saved as swf or equivalent (plays in a browser)	1
	The correct filename is used	1
	The size of the animation is 500 × 300	1
	Available marks	25

Task	Answer	Marks
See Task 5 below for example amendments.		
5	The Woodland image inserted in correct cell	1
	Candidate details inserted in correct cell	1
	Incorrect House entry generates an error message	1
	Incorrect House entry error message text is correct	1
	Omission of Name field entry generates an error message	1
	Omission of Number field entry generates an error message	1
	Omission of Session field entry generates an error message	1
	Omission error message text is correct	1
	Final alert text is generated and is fit for purpose	1
	Final alert person/people match is correct	1
Available marks		10

Task 1a

Evidence of suitable database structure shown from the relationship diagram



WoodlandsSchema file used correctly 1 mark

Determine tables and fields

Borrower/Resident table correct fields and key field 1 mark

Apartment table correct fields and key field 1 mark

Loans table and correct key field 1 mark

Loans table includes borrower ID 1 mark

Loans table includes date borrowed 1 mark

Loans table includes returned field 1 mark

Books table includes correct fields and key field 1 mark

ISBN table created with correct fields and key field 1 mark

Publishers table created with correct fields and key field 1 mark

Determine relationships

Borrowers related to Loans 1 mark

Borrowers related to Apartment 1 mark

Other relationships (Books – ISBN – Publisher) 1 mark

Task 1b

Evidence of a suitable form

Borrowers

Borrower ID:

Title: Mrs

Forename: Gina

Surname: Abbott

Apartment ID: 14

Loans

Book ID	Date borrowed	Returned	Author	Title
1	02/11/2015	<input type="checkbox"/>	Chris Drury	Silent Spaces
11	09/11/2015	<input type="checkbox"/>	Trudi Canavan	Thief's magic

Records: 1 of 2

Suitable data to test the form and the report with at least 3 borrowers

Overdue List

Title	Forename	Surname	Date borrowed	Days Overdue	Book Title	Author
Mrs	Gina	Abbott	09/11/2015	2	Thief's magic	Trudi Canavan
Mrs	Anna	Ballard	02/11/2015	5	Silent Spaces	Chris Drury
Mr	Jeffrey	Cruz	20/10/2015	22	Don't you believe it	Grahame and Sylvia Noun
Ms	Carmen	Glo...	04/11/2015	7	Bring up the bodies	Hilary Mantell
Ms	Kelly	Gru...				Karen Miller
						Joe Abercrombie

Test dates to be entered by examiner and results for the report and the merge letters to be evaluated.

Form Creation	
Borrower details shown (follow through from Task 1a)	1 mark
Suitable layout used (design is fit for purpose)	1 mark
Use of a subform	
Subform includes: Book id, + Author, Title fields as minimum	1 mark
Date borrowed and returned fields shown	1 mark
1st, Last navigation buttons added	1 mark
Next, Previous navigation buttons added	1 mark
Report for printing	
Data shown for at least 3 borrowers, at least 1 borrower with at least 2 books	1 mark
Borrower fields include Title, Forename, Surname	1 mark
Book fields include: Title, Author	1 mark
Book fields include: Date borrowed	1 mark
Book fields include: Days overdue field	1 mark
Layout and formatting of the report is fit for purpose	1 mark

Task 2

Evidence of creation of a suitable source document for the mail merge with the Names provided split GivenName and FamilyName

	A	B	C	D	E	F	G	H	I
1	Title	GivenName	FamilyName	Address	City/Town	Post Code	Tel.number	Request	Reply
2	Mrs.	Chloe	Kemp	32 Exning Road	HARGATE	NR16 0XB	*** 1663 7298	Double	Y
3	Dr.	Caitlin	Anderson	63 Hampton Court Rd	SOUTHWICK	PE8 9LJ	*** 5429 8350	Single	
4	Mr.	Harvey	Patel	85 Iolaire Road	NEW MILTON	BH25 6GY	*** 1246 4927	Double	
5	Mrs.	Abbie	Simmons	9 Trehafod Road	BUCKLAND ST MARY	TA20 4YR	*** 5465 5982	Double	Y
6	Ms.	Abbie	Baldwin	22 Mari Crescent	WARNBOROUGH	RG29 8XS	*** 3546 9563	Double	Y
7	Ms.	Emily	Gardner	91 Circle Way	CAIRNORRIE	AB41 8RJ	*** 5645 9496	Single	
8	Ms.	Holly	Burton	75 Manor Way	GREAT MALVERN	WR14 4AR	*** 7771 7330	Single	Y
9	Mr.	Ben	Gardiner	50 Fox Lane	BOOFARI	LL16 3DA	*** 6122 3469	Double	Y
10	Mrs.	Louise	Watkins	41 Guildford Rd	EAST COWTON	DL7 4RN	*** 0520 5031	Double	Y
11	Mrs.	Freya	Miles	24 St Maurices Road	PRESTON	CT3 8BR	*** 0047 0175	Double	Y

Evidence of the method used to split the names

The screenshot shows an Excel spreadsheet with the following data in column B:

Title	GivenName	FamilyName
Mrs.	Chloe	Kemp
Dr.	Caitlin	Anderson
Mr.	Harvey	Patel
Mrs.	Abbie	Simmons
Ms.	Abbie	Baldwin
Ms.	Emily	Gardner
Ms.	Holly	Burton
Mr.	Ben	Gardiner
Mrs.	Louise	Watkins
Mrs.	Freya	Miles

The 'Convert Text to Columns Wizard - Step 2 of 3' dialog box is open. The 'Delimiters' section has 'Space' checked. The 'Data preview' section shows the following columns:

GivenName	FamilyName
Chloe	Kemp
Caitlin	Anderson

Evidence of the mergefields inserted in the mergedocument

{ DATE \@ "dd:MMMM:yyyy" \ * MERGEFORMAT }

{ MERGEFIELD "Title" } { MERGEFIELD "GivenName" } { MERGEFIELD "FamilyName" }

{ MERGEFIELD "Address" }

{ MERGEFIELD "CityTown" }

{ MERGEFIELD "Post_Code" }

Dear { MERGEFIELD "Title" } { MERGEFIELD "FamilyName" }

Thank you for your interest in Woodland Homes.

{ IF { MERGEFIELD Request} = "Single" "We regret there are no single apartments available at the moment." "We have one vacancy for a double apartment in Ash house." }

{ IF { MERGEFIELD Request} = "Single" "We will notify you when vacancies arise." "Please ring the office to arrange a viewing." }

{ SKIPIF { MERGEFIELD Reply} = "Y" }

Yours sincerely

< Insert candidate name, centre number, candidate number here >

Evidence of the merged letters

Dr. Caitlin Anderson
63 Hampton Court Rd
SOUTHWICK
PE8 9LJ

Mr. Harvey Patel
85 Iolaine Road
NEW MILTON
BH25 6GY

Dear Dr. Anderson
Thank you for your interest in Woodland Homes.
We regret there are no single apartments available at the moment.
We will notify you when vacancies arise.

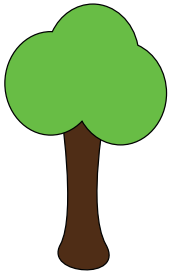
Dear Mr. Patel
Thank you for your interest in Woodland Homes.
We have one vacancy for a double apartment.
Please ring the office to arrange a viewing.

Ms. Emily Gardner
91 Circle Way
CAIRNORRIE
AB41 8RJ

Dear Ms. Gardner
Thank you for your interest in Woodland Homes.
We regret there are no single apartments available at the moment.
We will notify you when vacancies arise.

Task 3

Reproduce images of a tree using a vector graphics application



Add coloured text and text to follow a path



Reproduce images of a flower using a vector graphics application



Insert correctly sized images of the flower in the positions shown



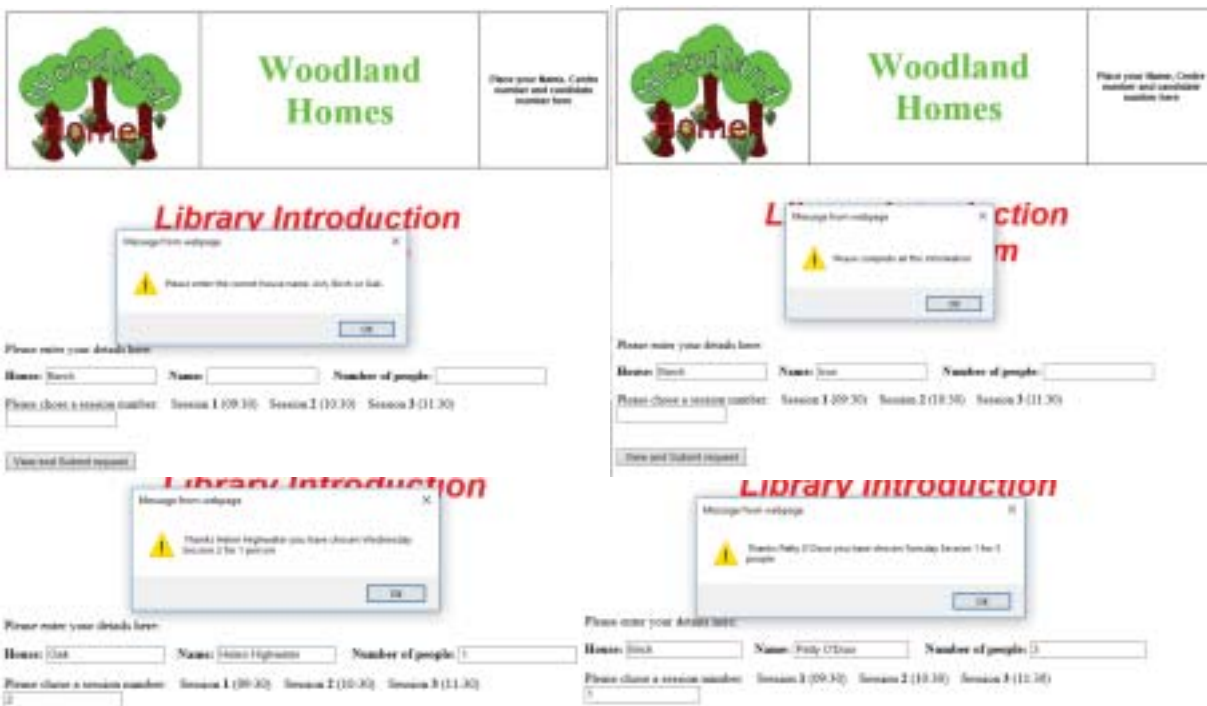
Task 4

Create an animation that fades in and fades out with text that doubles in size during each 2 second



Task 5

Amend JavaScript code to meet the requirements specified



For information only – Script with amendments shown highlighted

```
<SCRIPT>
function Acknowledge()
{
var Day;
var Borrower=Name.value;
var Error1;
var personORpeople;

{if (NumberBooked.value>1) {personORpeople="people"}
else {personORpeople="person"}}

{if (House.value=="Birch" || House.value=="birch") {Day="Tuesday"}
else if (House.value=="Oak" || House.value=="oak") {Day = "Wednesday"}
else if (House.value=="Ash" || House.value=="ash") {Day= "Thursday"}
else {Error1= "Please enter the correct house name. Ash, Birch or Oak.";window.alert(Error1);}}

{if (Name.value="" || NumberBooked.value<1 || SessionNumber.value<1) {Error1= "Please complete all
the information";
window.alert(Error1);}
else {Name.value=Borrower;window.alert(" Thanks " +Borrower+" you have chosen "+Day+" Session
"+SessionNumber.value+" for "+NumberBooked.value+" "+personORpeople);}
}
House.value="";Name.value=""; NumberBooked.value="";SessionNumber.value="";
}
```

BLANK PAGE